



**"Better Hearing,
Better Living."**

Contact Us

📍 JSS Institute of Speech and
Hearing
M.G Road, Mysuru - 570004

✉ jssish@jssonline.org /
jssishmys@rediffmail.com

☎ 0821-2548229, 0821-2335014



JSS Mahavidyapeetha

JSS INSTITUTE OF SPEECH AND HEARING

Mahatma Gandhi Road, Mysuru 570004

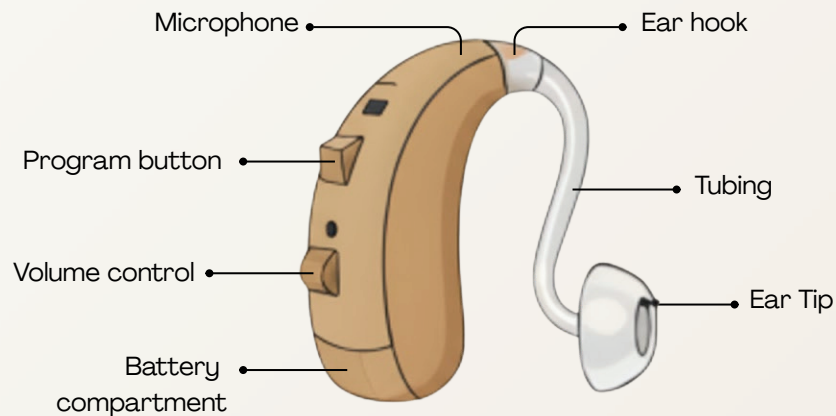


Understanding Hearing Aids:

- **Parts of Hearing Aid**
- **How to wear the Hearing Aid?**
- **How to change battery?**

Parts of Hearing aid

- **Microphone:** This picks up sounds from the surrounding environment.
- **Receiver:** This acts like a speaker and delivers the sound to ear.
- **Battery compartment/charger:** It holds the battery that allows the hearing aids to switch on and function.
- **Volume control:** This allows you to make sounds louder or softer.
- **Program button:** This button helps you to change the hearing aid settings according to the listening environment such as a quiet classroom or a busy restaurant.



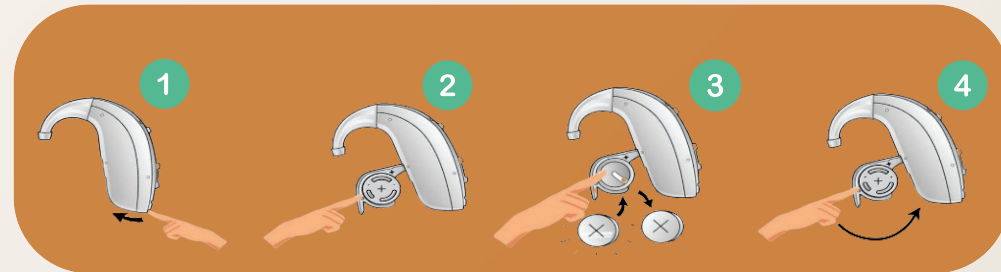
- **Ear mould/tip/dome:** This soft, comfortable piece fits nicely inside the ear. It will hold the device and efficiently transmit sound from the receiver into the ear canal.
- **Wax guard:** This prevents earwax from entering the receiver and blocking the sound pathway.
- **Ear-hook/Huggies:** This ensures that the hearing aid remains in place and reduces the chance of falling off during activities.

How to Wear the Hearing Aid



- **Clean Hands, Clean Ears!** Always wash your hands before handling the hearing aids, and ensure the ears are clean.
- Gently pull the ear backward and upward a little bit. This creates a straight canal for insertion.
- Carefully insert the soft ear part (mould, tip or dome) gently into the ear canal. It is important not to push too hard.
- Rest the hearing aid behind the ear.

How to Change Battery



- First remove the sticker on the new battery.
- Wait for 30 seconds.
- Now open the battery compartment of the hearing aid and place the new battery with the '+' mark facing upward.
- To switch on the hearing aid close the battery compartment.